

Ubique Minerals

Daniel's Harbour Zinc Discovery

Corporate update October 8th 2020

Disclaimer

- This presentation may contain forward-looking statements including, but not limited to, information regarding geological interpretations, potential timing and content of exploration programs, receipt of permits or property titles, joint venture agreements, Company financings, etc. Forward-looking statements refer to events and conditions which have not yet taken place, and therefore involve inherent risks and uncertainties. Actual results may differ materially from those anticipated in these statements. Ubuque Minerals Limited relies upon litigation protection for forward-looking statements.
- Gerald Harper, P. Geo. CEO, is the Qualified Person under NI 43-101 for the projects discussed in this presentation.

Zinc -

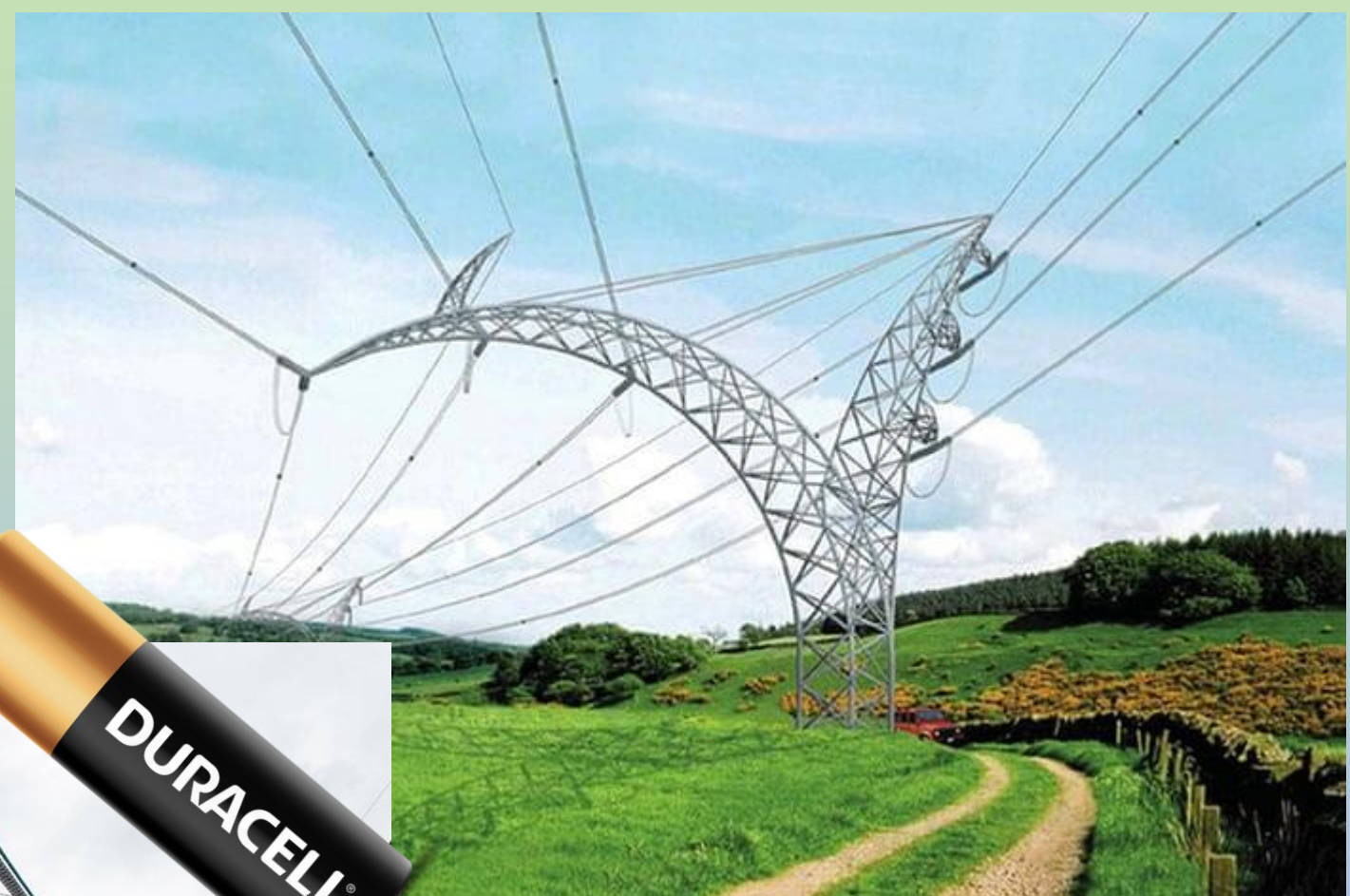
the protective metal

galvanizing steel = 87% of use

The alloy metal

brass and other alloys = 12% of use

The battery metal

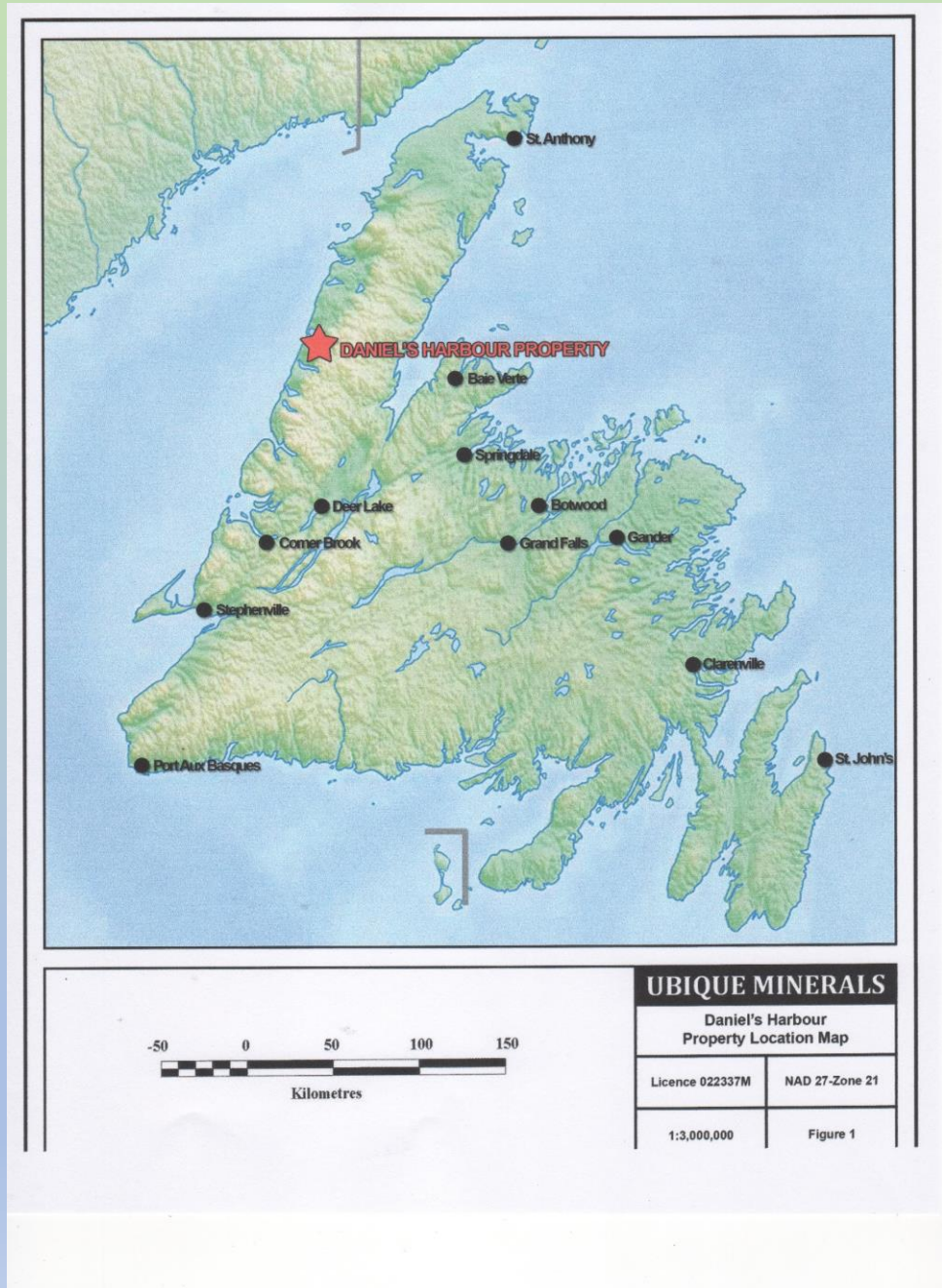


The healthy metal
Key component of
Sunscreens
1% of use



Overview

- Private company made zinc discovery in Newfoundland in 2017 adjacent to former Daniel's Harbour zinc mine
- 2017 drill program yielded spectacular high grade intersection
- Company went public in August 2018
- Drilling in 2018 which defined trend of PE Zone
- Optioned surrounding area from Minkap Resources covering whole former mine site
- Undertook more drilling in 2019, confirmed historic 1386 and Nose Zones



What was Daniels Harbour?

- A high grade zinc mine in western Newfoundland adjacent to town of Daniel's Harbour
- Operated from 1975 to 1990 with production of 7.225 m tons @ 7.93% Zn.
- 20% open pit, 80% underground mined, 96-98% recovery, very high grade, premium concentrate shipped from deep water port 65 kilometres away.
- The zinc ore is a pale coloured sphalerite in dolomitic host rock; a “Mississippi Valley Type” deposit. Yielded a very high grade (62.5 - 63.0% Zn) clean concentrate.

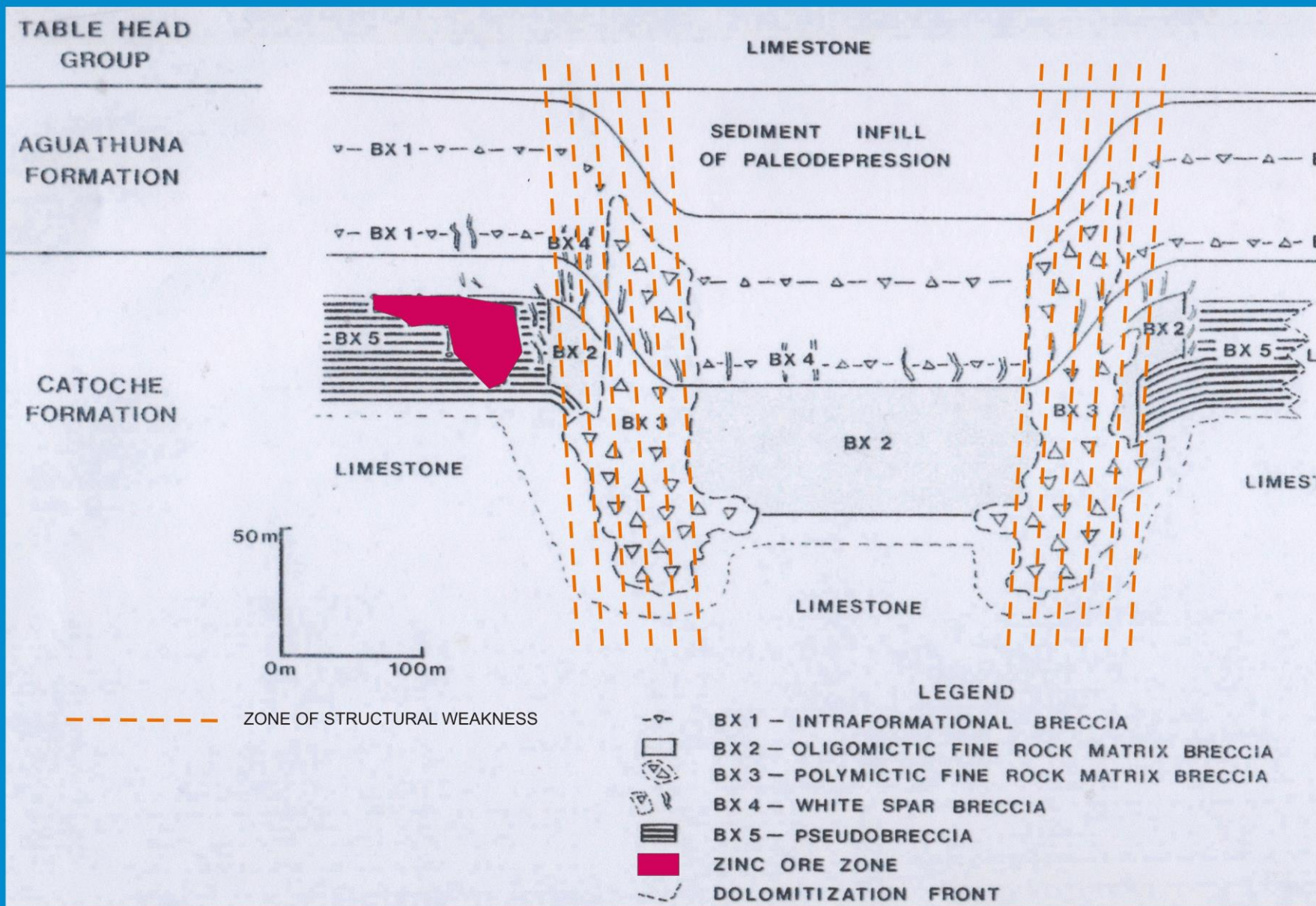


The Power of Grade!

- The former mine had an average grade of almost 8% Zinc.
- 8% Zinc equates to 176 pounds of contained zinc in every metric tonne of ore, which at US\$1.10 per pound of zinc gives a rock value of US\$193.60 (C\$250.00) per tonne. (Equivalent gold grade would be 5 g/t)
- The break even operating cost of the former mine was the equivalent of 4% zinc.

What is the Geology?

The ore zones are small in cross section but extend 100s of metres or kilometres in length, are flat and close to surface



Idealised Cross Section through Daniels Harbour ore zone showing relation to stratigraphy, structure and alteration breccias (after Tom Lane)

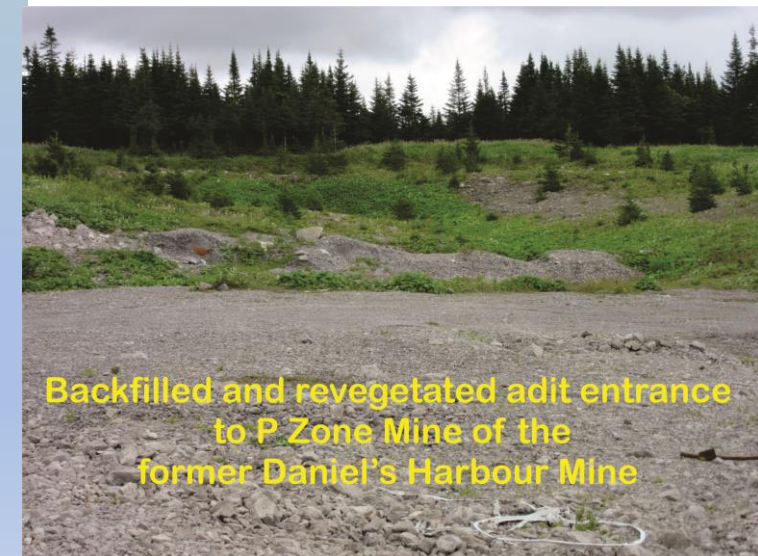
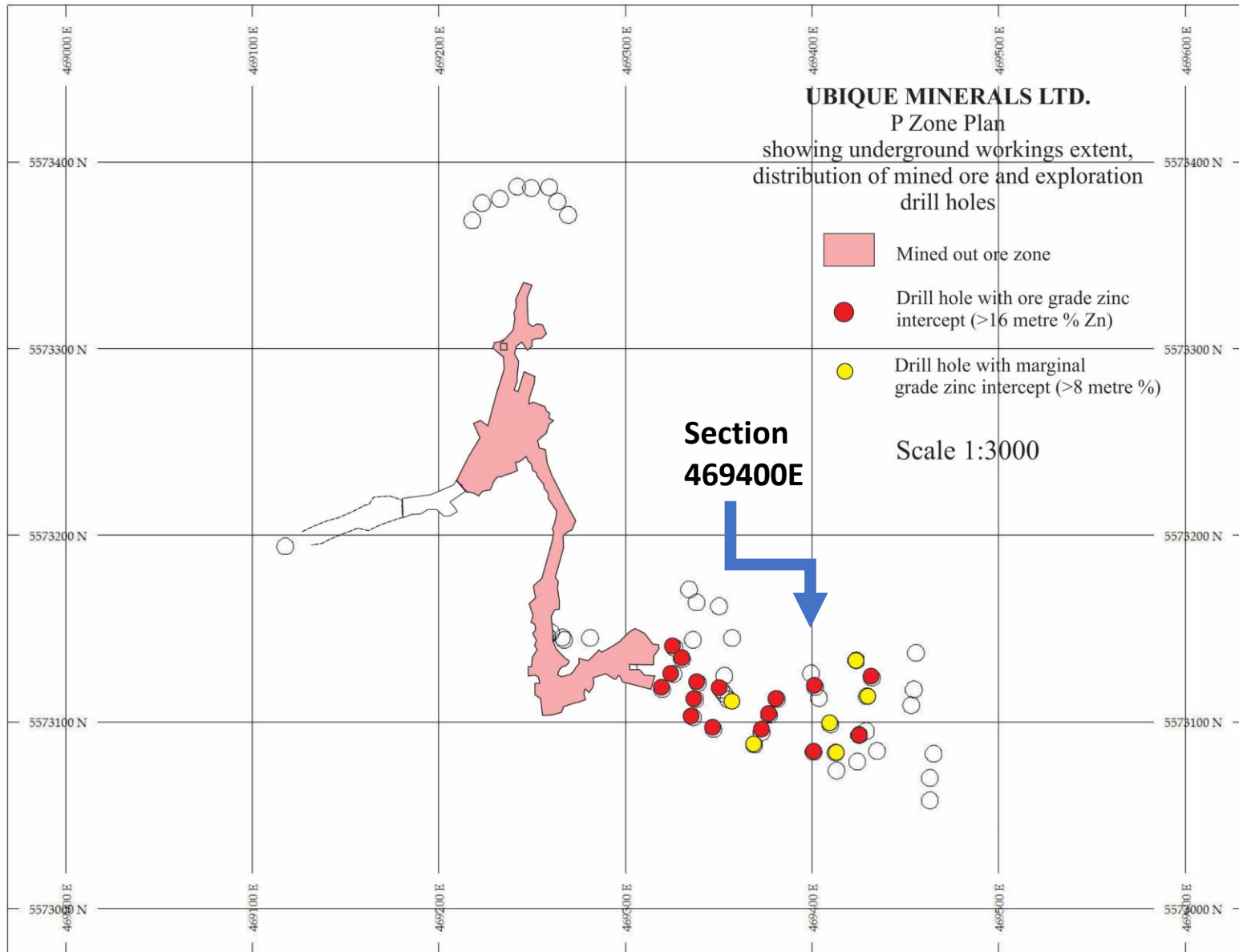
Target Zones for more drilling

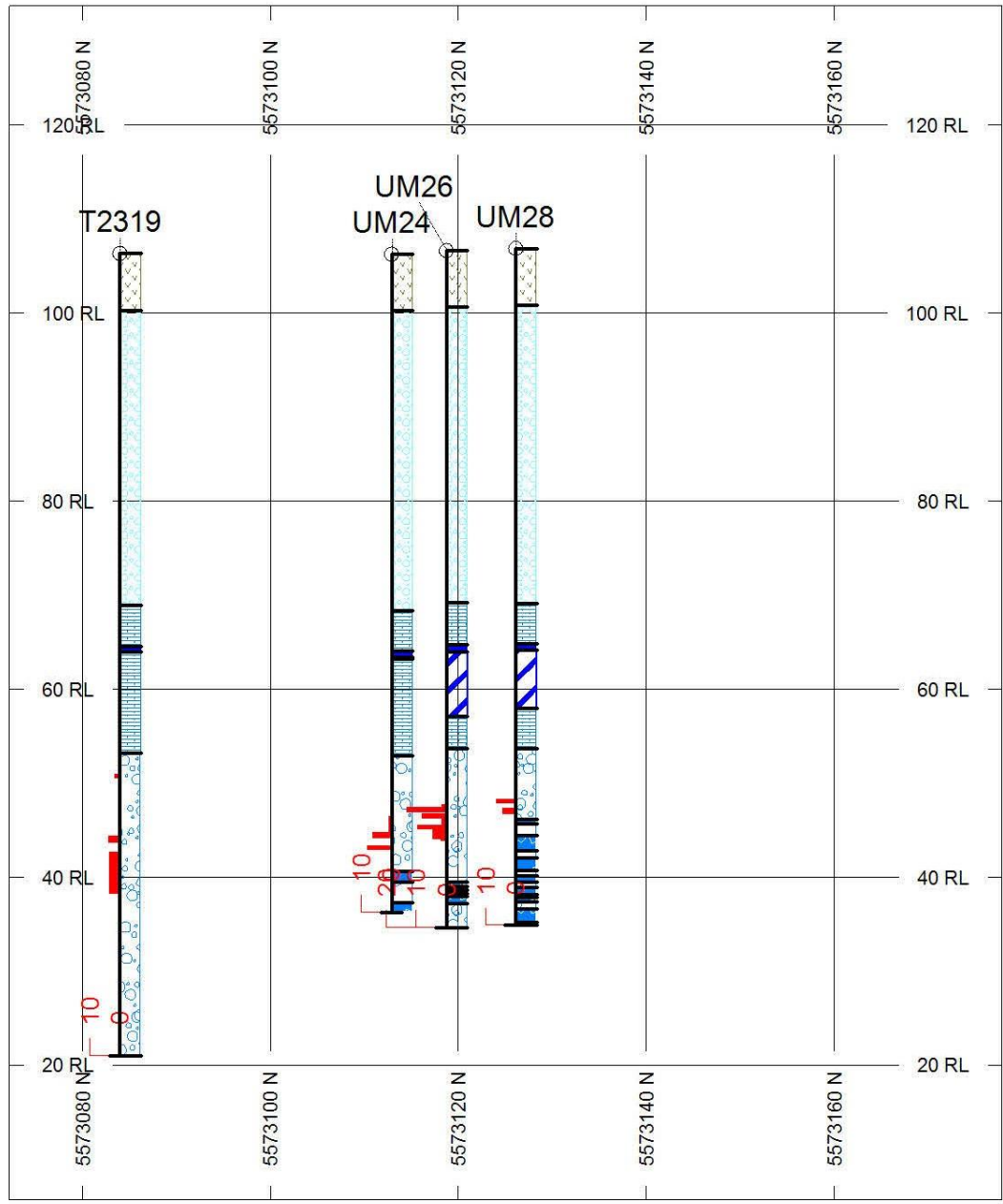


Zone	Depth	UBQ DHs	Old DHs	Drilled length
PE Zone	45m	25	10	100m
2160 Zone	<25m	To be drilled	Yes	?
N Zone	140m	1	Yes	?
1386 Zone	175m	1	Yes	175m
Nose Zone	145m	1	Yes	120m
O Zone	12 - 25m	To be drilled	Yes	100m

Plan of Daniel's Harbour Former Mining Area showing mined zones (orange) Ubique drilling zones (solid red) and surmised zones (dashed red)

P Zone exploration





HOLES PLOTTED

TOTAL 4

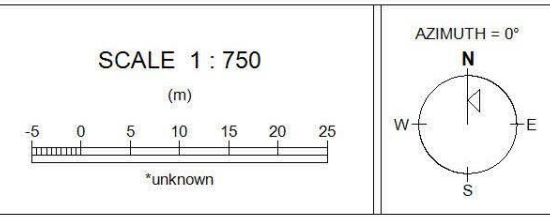
- T2319
- UM24
- UM26
- UM28

BAR GRAPHS	L/R	COL	
Zn %	L	█	
ROCK CODES	PAT	LABEL	DESCRIPTION
Geology		OVB	Overburden
		DOLSIL	Siliceous Dolomite
		DOLGRY	Dark Grey Dolomite
		PBX	Pseudo-breccia
		WORM	Worms marker bed in dolomite
		PELBED	Pellet bed marker in dolomite
		PBX30	Pseudo-breccia >30%

ASSAYS	L/R	TEXT
Geology	R	----

SECTION SPECS:

REF. PT. E, N	469400 m	5573125 m
EXTENTS	105.6 m	127.1 m
SECTION TOP, BOT	132.7 m	5.655 m
TOLERANCE +/-	6.25 m	

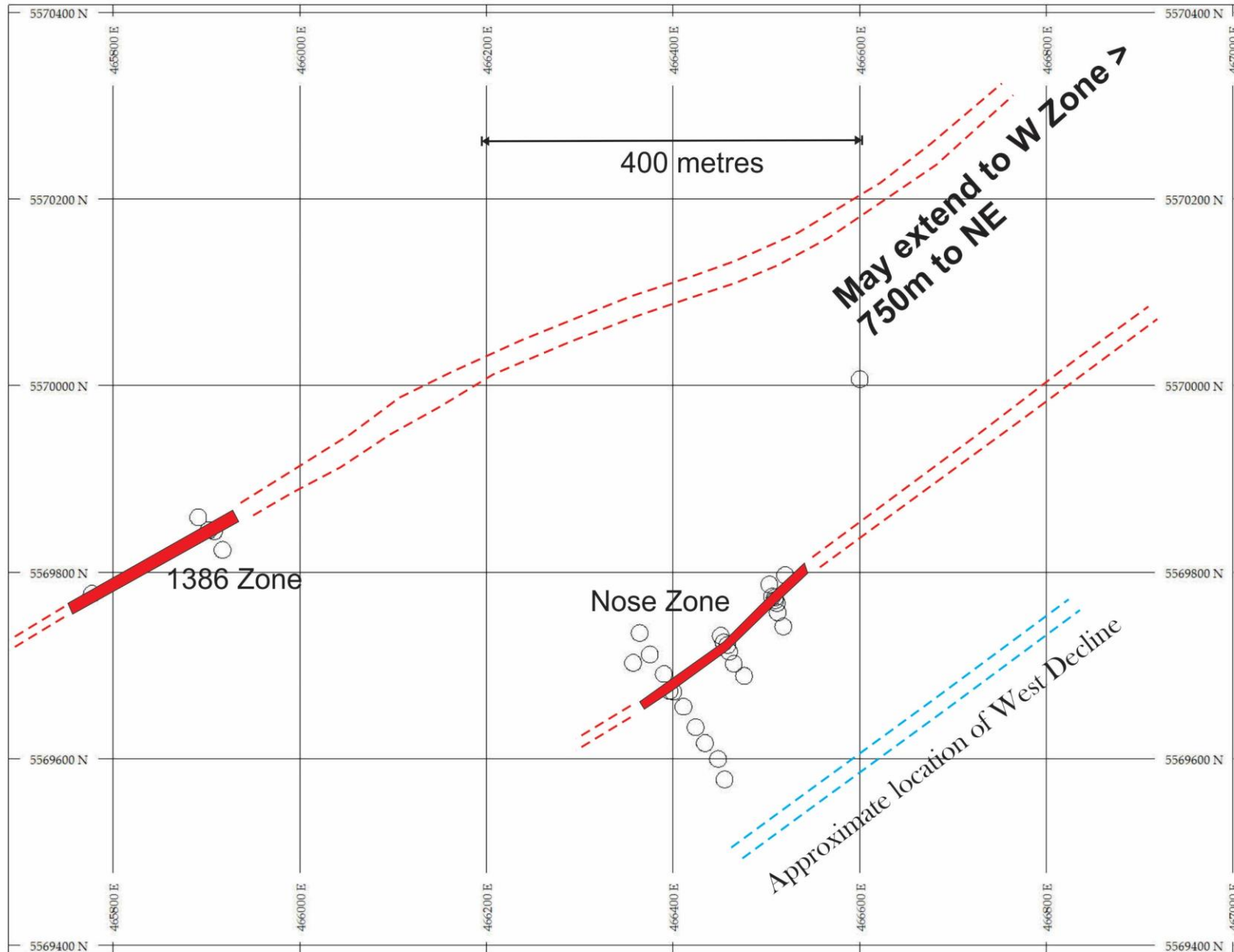


UBIQUE MINERALS LTD
 Daniel's Harbour Project
 PE Zone
 Section 469400E

P Zone

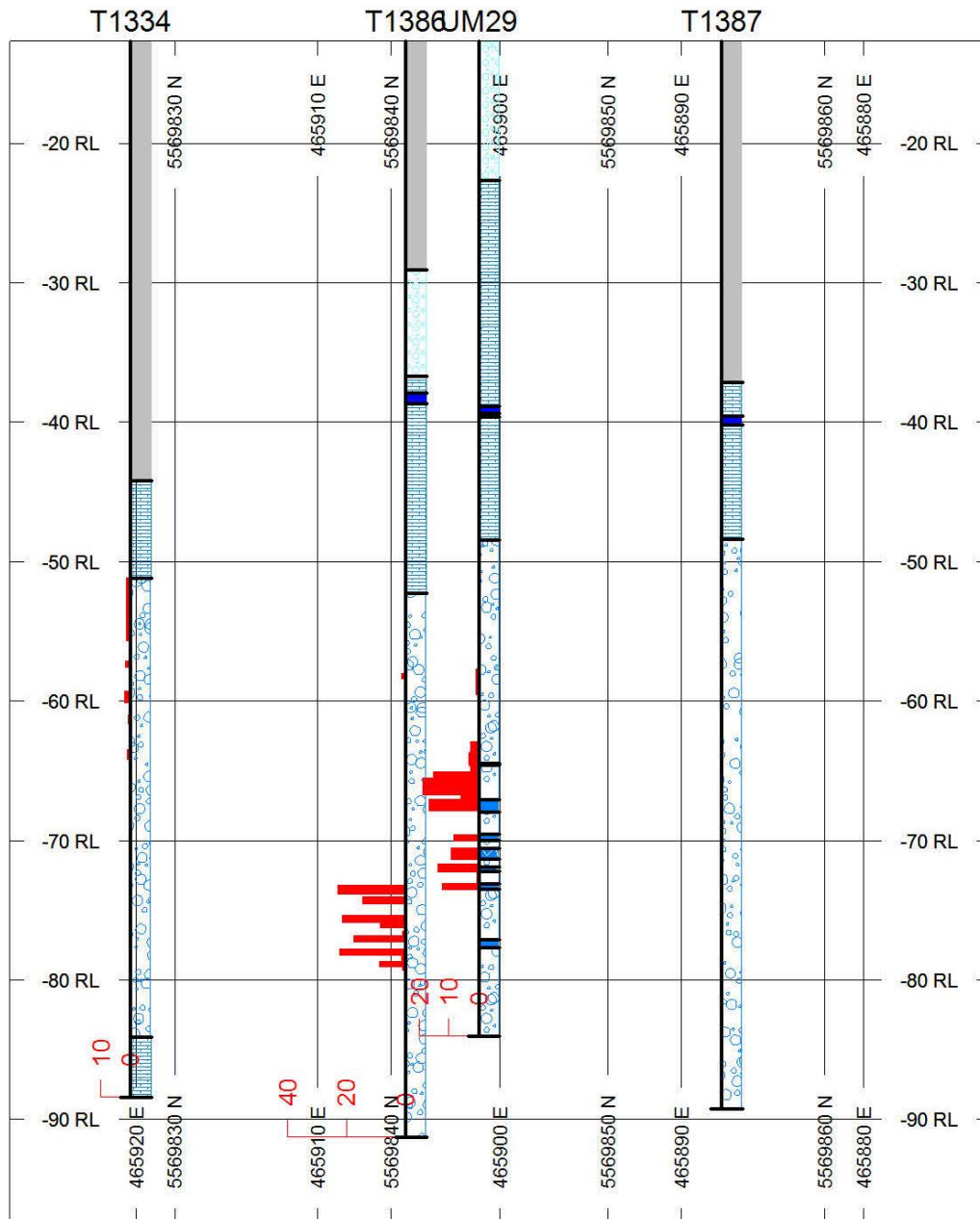
Section 469400E

Note increasing intensity of pseudobreccia northwards (unit with symbol PBX30). It suggests we need to drill northwards!



Plan showing
 Nose and 1386
 Zones drilling
 and potential
 extensions
 based on
 regional
 compilation of
 sedimentary
 facies
 information
 - a demonstration of the
 importance of having
 old records

1386 Zone results of twinning



HOLES PLOTTED

TOTAL 4

T1334 T1386 T1387 UM29

BAR GRAPHS	L/R	COL	
Zn %	L	█	
ROCK CODES	PAT	LABEL	DESCRIPTION
Geology	LMST		limestone
	OVB		Overburden
	DOLSIL		Siliceous Dolomite
	DOLGRY		Dark Grey Dolomite
	PBX		Pseudo-breccia
	WORM		Worms marker bed in dolomite
	PELBED		Pellet bed marker in dolomite
	NC		No core
	PBX30		Pseudo-breccia >30%

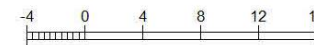
ASSAYS L/R TEXT
Geology R -----

SECTION SPECS:

REF. PT. E, N	465900 m	5569845 m
EXTENTS	70.4 m	84.7 m
SECTION TOP, BOT	-12.65 m	-97.35 m
TOLERANCE +/-	10 m	

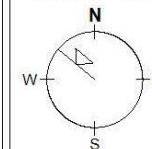
SCALE 1 : 500

(m)



*unknown

AZIMUTH = 310°



UBIQUE MINERALS LTD
Daniel's Harbour Project
Section 310 deg - depth enlargement
MINKAP Option - 1386 Zone

Resource Implications - drilling to date

- ✓ PE Zone drilling suggest average grade of 8% zinc and open to NE
- ✓ NOSE Zone has strike length of 120 metres and open in each direction
- ✓ 1386 Zone has confirmed high grade and open in each direction
- ✓ Regional geology suggests NOSE and 1386 Zones may be part of same system - if so then potential for strike of >1km.
- ✓ Infrastructure exists for rapid development to production

Ubique's Exploration Advantages!

- Ubique's drilling already extended former mine deposit at shallow depths. Will follow up with more drilling to block out resource.
- Exclusive exploration database of more than 2,000 drill holes, some with "ore" grade intersections which will be subject to follow up drilling.
- Exploration area easily accessible and close to operating base in Daniel's Harbour by paved road with parallel electric power line.
- New mine development would take advantage of existing infrastructure including underground declines close to new discoveries.
- Metallurgy needed to produce high grade concentrate simple and low cost

Summary

- Drilling has confirmed a minimum of 3 zinc zones
- All are high grade similar to historic mine grade
- Like the historic ore the zinc mineralization will yield a very high grade, clean concentrate liked by smelters
- Plans for more drilling to block out resources, to scout drill other known zone targets including the very shallow O Zone and 2160 Zone and refine geochemical targets to northeast along trend

Corporate Structure

- Shares outstanding: 45,418,085
 - Held by 7 key investors: 32,986,206 (73%)
 - Recent trading: \$0.045 - 0.06
 - 52 week range: \$0.03 - 0.06
 - Market Capitalization: \$2.73 million
- Current financing: 3.3 million flow through shares @ \$0.06 ea

Management and Directors

- Gerald Harper, CEO, director and QP
 - Roland Crossley, VP Exploration and director
 - Gaurav Singh, CFO and director
 - David Lonsdale, Director and Chairman of the Board
 - Larry Quinlan, Director
 - Mark Wettreich, Director
 - Peter Wanner, Director
- To contact us call 416-232-9114 or e mail gharper@ubizuezinc.com



Thank you